



Marwadi Education Foundation's Group of Institutions,  
Rajkot-Morbi Road, Rajkot 360003.  
Telephone: +91 281 2923112, 2924115 / 56  
Mobile : +91 9727724661 / 62 / 63 / 64 / 65 / 66  
Website : [www.marwadiuniversity.ac.in](http://www.marwadiuniversity.ac.in)  
Email : [info@marwadiuniversity.ac.in](mailto:info@marwadiuniversity.ac.in)  
WhatsApp: +91 8980030090



ARE YOU READY  
TO MEET YOURSELF?  
FLIP THROUGH  
◀ THIS BROCHURE



# DISCOVER A STORY WITH A PURPOSE

## Inception

Marwadi Education Foundation's Group of Institutions (MEFGI) was incepted as a major organ of **Marwadi Education Foundation** in 2008, under the Bombay Public Trust Act 1950. Marwadi University was established under Gujarat Universities Act (Act 9 of 2016) on 9th May, 2016. **Marwadi University** is promoted by Marwadi Shares and Finance Limited (MSFL) - a major stock broking company in India & Chandarana Intermediaries Brokers Pvt. Ltd. (CIBPL) - a leading firm dealing in technical and arbitrage trading in Indian Stock Markets.

## Purpose

Marwadi Education Foundation was incepted with the purpose of enhancing human capabilities. MU strives to contribute knowledge & skill to augment human life and provide immense opportunities to every individual to discover their true potential. The university has a commitment to provide best and industry relevant education to all the students.

## Vision

Our vision is to address the challenges faced by our society and planet through education that builds capacity of our students and empowers them through their innovative thinking, practice and character building. This, in turn, would boost their creativity while making them responsible towards the utilization of the limited natural resources to face the challenges of the 21st century.

## Mission

- To produce creative, responsible and informed professionals
- To produce individuals who are digital-age literates, inventive thinkers, effective communicators and highly productive
- To deliver cost-effective quality education
- To offer world-class, cross-disciplinary education in strategic sectors of economy through well devised and synchronized delivery structure and system
- To provide a conducive environment that will enable students to experience higher level of learning acquired through constant immersion leading to the development of character, virtues, values & technical skills



World-class  
Infrastructure



Rich Pedigree  
of Faculty



Holistic Development  
of Students



Great Placement  
Opportunities

## INDUSTRY ASSOCIATIONS & MoUs



## INTERNATIONAL MoUs



## RECOGNITIONS

Marwadi University is recognized and approved by major organizations related to education and the government.

The university is also associated with major educational societies and government bodies.



# DISCOVER NAAC A+ RATED EDUCATION

Quality in education doesn't come easy! If it comes, it comes at a premium cost. Marwadi University was founded to provide education that is much higher, better and useful than what is being already provided by other major institutions while being affordable at the same time. This objective is being fulfilled on a continuous basis by the entire team at the university. But how do you make sure if your child is getting the quality of education that is being claimed by the university? More importantly, why should you choose Marwadi University based on its NAAC A+ accreditation?

The answer is simple!  
**NAAC A+** Accreditation stands for excellence!



Gujarat's only NAAC A+ Accredited Institute.

Why does this accreditation matter?

NAAC- National Assessment and Accreditation Council is **the country's highest accreditation council set up by the Government of India** in 1994. It is an autonomous organization under Ministry of Human Resource Development and UGC (University Grants Commission).

Since then, NAAC has been the quality eye of the GoI for evaluating the country's higher education institutions on the basis of many criteria that impact the education being provided by the institutions, directly or indirectly.

Every university and educational institution has to go through this procedural and operational accreditation process compulsorily, based on which they are provided a grade. This grade is a reflection of the quality of education they ultimately dish out to the students.

Marwadi Education Foundation was graded with a glorious 3.51 on a scale of 4 to achieve the A+ Grade.

Only 4% of the total educational institutions in India are accredited with NAAC A+ Grade.

## What does the A+ grade mean?

A+ Grade signifies the institution's superior quality in:



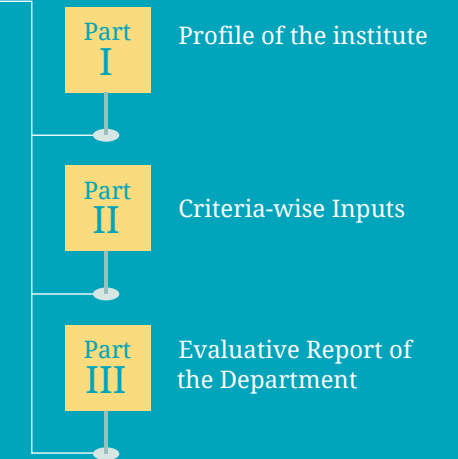
A 3-member committee from NAAC visited the campus and went through every major and minor detail along with a 365 slide detailed presentation for this process. From a detailed curriculum presentation to providing an account of the food served at the canteen, the team analyzed and evaluated every aspect of the university.

## What are the benefits of NAAC accreditation?

- Start-ups by MEFGI students preferred for funding
- An edge over other university students
- First choice of international companies for placement
- Ease in foreign education for further studies

## The process of getting accredited by NAAC

Getting NAAC accreditation is a very rigorous process that involves the preparation of Self-study Report which is written in three parts:



## AN A+ GRADE DOESN'T COME EASY!

It has been made possible through the foundation's vision, determination and long-term thinking.

This A+ Grade is a testimony of the success of the continuous accumulated efforts of the foundation to deliver world class education in Gujarat at affordable cost.



## From the Desk of the Chairman

Shri Ketan Marwadi



“

Marwadi University has a unique platform that gives students a plethora of unparalleled opportunities to experience the joy of learning, the wonders of new knowledge and to unearth their limitless potential and capabilities.

When you become part of the Marwadi University family, we leave no stone unturned to guide, mentor, nurture, and prepare you to meet the global requirements—both personal and professional. Our gift to you and our nation are strong and ethical leaders who will shape and change the destiny and future of the world.

”

## The Vice Chairman's vision for Marwadi University

Shri Jitendra Chandarana



“

You will, I hope, discover the exhilaration of the intellectual life and a chance - to contribute to the thought - whose measure will move our descendants many years from now. I wish you all the very best in your future endeavors.

”

- Marwadi University is a community of students and staff dedicated to bring out the best in all its members. Our aim is to provide the finest possible environment for teaching, learning, and research.
- We envision a time when youth from different regions are engaged in all sectors of technology and management where issues affecting young people are debated and decisions made.
- We create a network of youth empowered with skills and knowledge, to be able to contribute to healthy economy and growth of the society and nation.
- We are molding young minds to be active in global events where their opinions can be listened to and respected.
- We are committed to create a vibrant and stimulating environment to live, self-learn, work and play.

## The Honorable Trustee has a message for the students

Shri Sandeep Marwadi



“

I strongly encourage all the prospective students to visit our campus, meet with the HODs, TIPO team, admissions team, and student section officials to find out more about the university's culture and academic programs.

”

At Marwadi University, we open minds to “connect the dots”, see the big picture and make new sense of life. We create the campus environment where students are:

- Exposed to exciting campus events that build social skills
- Challenged by industry projects that open their eyes to the complexities of the real world
- Stimulated with personal freedom to explore and experiment that build confidence and shape opinions
- Engaged in incubation of new enterprises that merge different skills to create new ones
- Involved in community work that add value and meaning to their lives

## Vision as the Provost of Marwadi University

Dr. Y. P. Kosta



“

I am pleased to share with our stakeholders that we, at Marwadi University, are conscious about the need for growth and sustainability of Engineering, Management & Computer education that is necessary for our country in terms of societal transformation, economic prosperity and global peace. In view of this, MU has developed world-class infrastructure and laboratory, employed competitive manpower, deployed ancillary facilities and created an environment that offers the best-of-learning experiences to map match and compete with the best in the world.

I hope that you will continue to choose and consider us as your mentor partner for your life and shower your blessings in this never ending journey of ours. Finally, education transcends civilizations, people & life and controls our future; let us all join together and tread for a better and prosperous future.

”





# DISCOVER MARWADI UNIVERSITY

8,500+ students from 22 states  
and 14 countries

The university takes  
pride in their discovery!



## WHAT THEY DISCOVERED AT MU

### Academic Experts

Expert faculty team comprising of accomplished scientists, researchers, trainers, innovators, and entrepreneurs

### Advanced Labs

Laboratories with state-of-the-art equipment, hardware, software and teaching aids

### Faculty Development Programs

Structured Faculty Development Programs designed to enhance teaching and learning methodologies

### Technology Backbone

Education ecosystem adequately supported by advanced and integrated technology infrastructure

### Placements

10,000+ job opportunities created, 1800+ companies visited

### Recreation

4 acres sports facility with lake-side track for walking and jogging

### Industry Interactions

Seminars, visits, projects and counseling sessions by experts from reputed industries

### Student Clubs

Student-led technical, creative, skill based and innovative clubs

### Soft Skills Training

Training for language, communication and character building

### Holistic Living

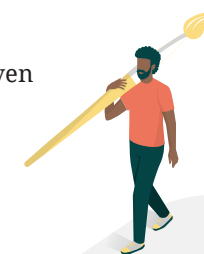
2000+ capacity hostel facilities for boys and girls with perfect blend of culture, fitness and entertainment activities

### Training & Placement Cell

One of its kind Career Readiness Program designed and delivered by dedicated in-house training experts

### Learning Spaces

Engaging, interactive and technology driven learning infrastructure



# AWARDS & ACCLAMATIONS

Marwadi University is the most awarded university in India with 6 awards in 2018 and counting.



## AWARDS 2018

Best Upcoming University of India 2018 by ASSOCAM National Excellence Awards 2018

Transformational Leader in Engineering Education Award by IUCEE 2018

Smart University Award by SKOCH Smart Education Awards 2018

Innovative Learning & Teaching Awards by ET NOW-Making of Developed India Awards for Excellence in Education

University of the Year (West) by Times NOW Indian Education Awards 2018

Zee Young Achievers Award by Zee 24 Gujarat's Young Achievers Award 2018

## AWARDS 2017

Innovation in Placements Award by ABP News National Education Awards 2017

Institute Providing Excellence in Placement by World Leadership Federation 2017

Pedagogical Innovation Award 2017

## AWARDS 2016

Best Engineering College of India (West) Award by ASSOCHAM in 2016

## AWARDS 2015

Best MBA College Award 2015 by CMI

# DISCOVER NEW AVENUES

At Marwadi University, the students get a whole new world of learning with courses and specializations that let them embark on their own choice of career path. What comes out is a student who knows exactly who he/ she is and is thus, industry-ready even before he/ she gets their degree!





# DISCOVER THE PROFESSIONAL IN YOU

## Courses Affiliated to GTU



### Faculty of Engineering

#### Bachelor of Engineering (B.E.)

- Mechanical Engineering
- Automobile Engineering
- Civil Engineering
- Computer Engineering
- Information Technology
- Electrical Engineering
- Electronics & Communication
- Environmental Science & Engineering



### Faculty of P.G. Studies & Research in Engineering & Technology – FoPG

#### Bachelor of Engineering (B.E.)

- Computer Engineering

#### Master of Engineering (M.E.)

- Mechanical-CAD/CAM
- Mechanical -Thermal Engineering
- Civil - Structural Engineering
- Civil - Transportation Engineering
- Electrical
- Electrical-PE&ED
- EC
- EC-VLSI System Design
- Computer Engineering



### Faculty of Management-FOM

- MBA



### Faculty of Computer Applications

- MCA

## Courses Affiliated to MU



### MEFGI Diploma Studies

- Mechanical Engineering
- Automobile Engineering
- Civil Engineering
- Electrical Engineering
- Computer Engineering
- Chemical Engineering
- Information & Communication Technology

### PhD Programs

- PhD in various disciplines



### Faculty of Technology

#### Bachelor of Technology (B.Tech.)

- Mechanical Engineering
  - Automobile Engineering
  - Civil Engineering
  - Computer Engineering
  - Computer Engineering -Big Data and Analysis
  - Computer Engineering -Artificial Intelligence
  - Information Technology
  - Information & Communication Technology
  - Electrical Engineering
  - Electronics & Communication
  - Chemical Engineering
  - Agriculture Engineering
- #### Master of Technology (M.Tech.)
- Environment Engineering
  - Chemical Engineering
  - Cyber Security
  - Geo-tech Engineering



### Faculty of Science

#### Bachelor of Science (B.Sc.)

- Microbiology
- Chemistry
- Physics
- Maths

#### Master of Science (M.Sc.)

- Microbiology
- Bio-Technology
- Chemistry
- Physics
- Maths
- Environment Science



### Faculty of Agricultural Science

- B.Sc. Agriculture



### Faculty of Business Management

- MBA



### Faculty of Liberal Studies

- B.B.A
- B.B.A. (Hons.)
- B.B.A. (Financial Markets)
- B.Com
- B.Com (Hons.)



### Faculty of Computer Applications

- B.C.A.
- B.C.A. (Hons.)
- M.Sc. Cyber Security & Cyber Law
- M.Sc. Software Technology
- M.Sc. Data Science & Analytics



### Faculty of Law

- B.Com L.L.B. (Hons.) (Integrated 5 years)
- B.A. L.L.B. (Hons.) (Integrated 5 years)



### Faculty of Pharmacy

- B.Pharm



### Faculty of Architecture

- Bachelor of Architecture



### Institute of Design & Visual Arts

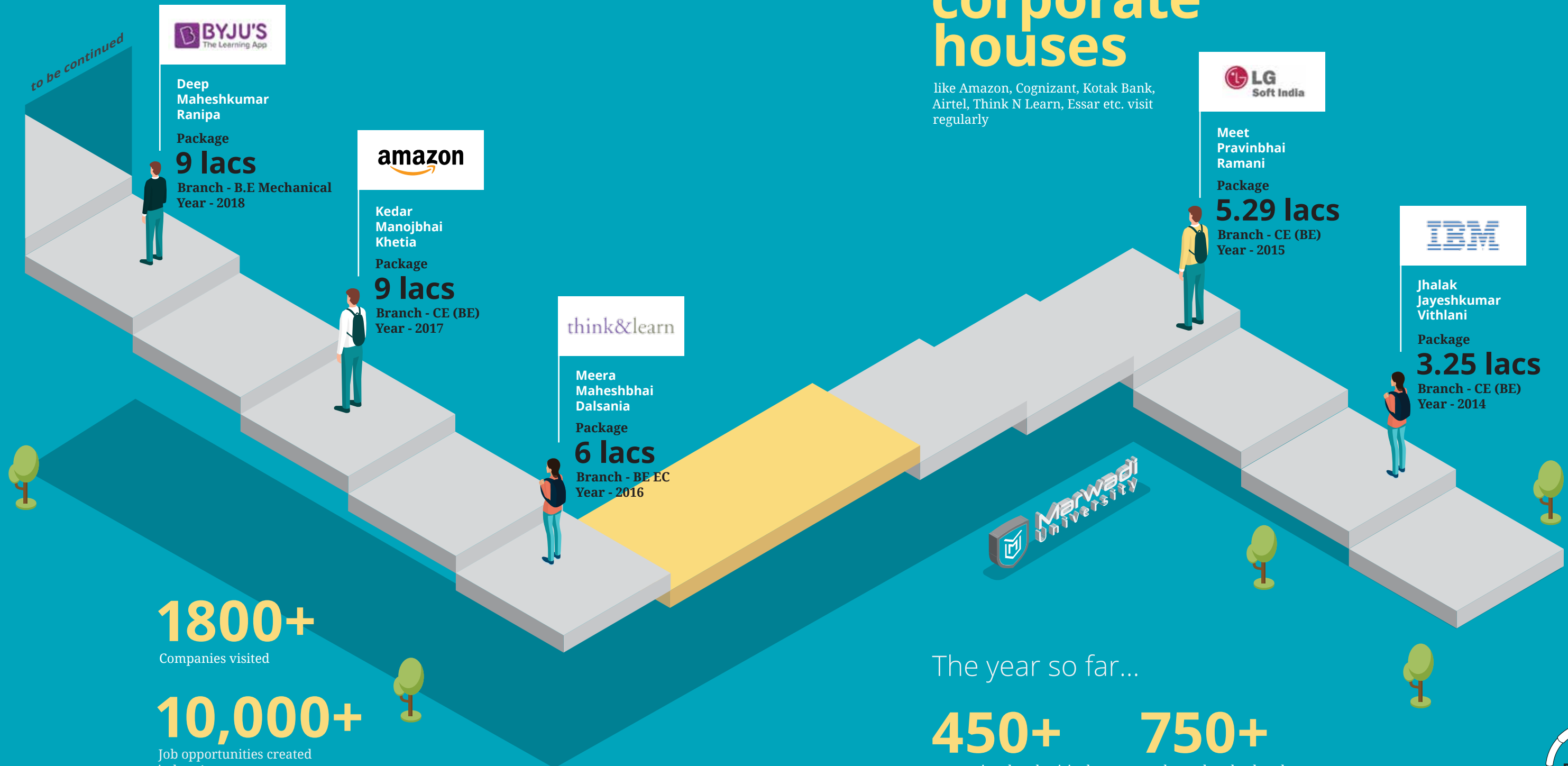
- Bachelor of Design (B Des.)



# DISCOVER YOUR TRUE CALLING

The largest dedicated full time Placement Cell ensures all the students get placed in top companies at reputable positions. The team, along with the students makes Marwadi University the first choice of corporates from diverse geographical locations.

When the Placement Cell and students work together, wonders happen!



**1800+**  
Companies visited

**10,000+**  
Job opportunities created  
in last 4 years

**47**  
Students placed in  
Think N Learn on a single day

## Top corporate houses

like Amazon, Cognizant, Kotak Bank, Airtel, Think N Learn, Essar etc. visit regularly

## Renowned corporates

like LG Soft, Think N Learn etc. choose only Marwadi University for hiring resources in entire Gujarat

The year so far...

**450+**  
companies already visited

**750+**  
students already placed



# THE LARGEST DEDICATED PLACEMENT TEAM

- Network with prominent members
- Placement opportunities to all students
- Make students job-ready even before they get their degree
- Organizing in-plant training, visits, executive training and induction programs
- Strategic Developmental Programs
- Comprehensive Training Programs
- Entrepreneurship, innovation and managerial skilling programs
- Sessions by engaging and inspiring speakers
- Special focus on Communication Skills, Personality Development, Aptitude, Computational Skills, Organizational Citizen Behavior and Domain Specific Knowledge





Dedicated 3 hours per week per student

Every student goes through a detailed 'Skill Assessment Test' to determine their overall Employability Index.

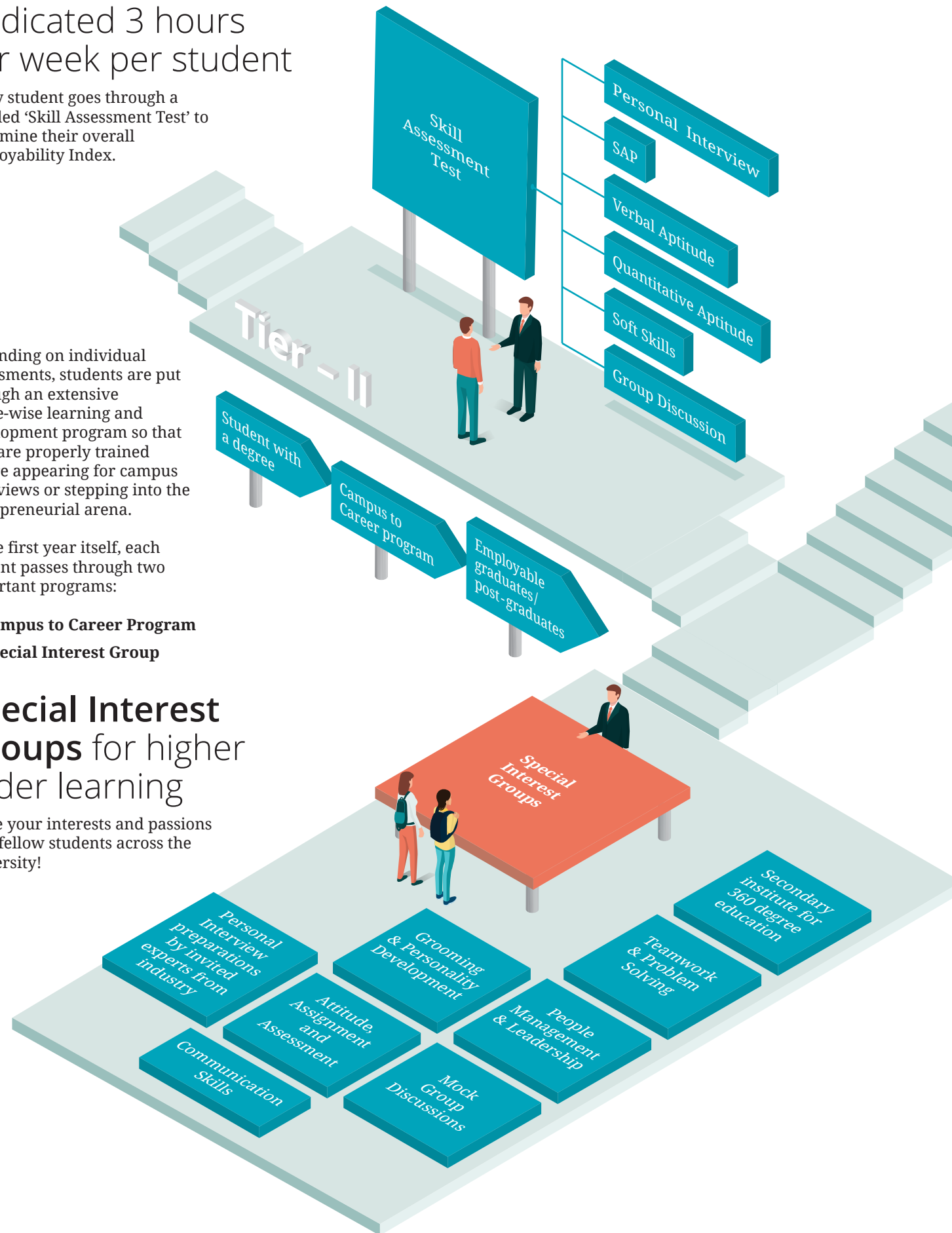
Depending on individual assessments, students are put through an extensive phase-wise learning and development program so that they are properly trained before appearing for campus interviews or stepping into the entrepreneurial arena.

In the first year itself, each student passes through two important programs:

- Campus to Career Program
- Special Interest Group

## Special Interest Groups for higher order learning

Share your interests and passions with fellow students across the university!



# Tier - III

Learning to Learn - Towards a fulfilling life

During the final stages, the students are prepared for the life that awaits them once they step outside the campus with their degree in hand. The mentors prepare the students for life with managerial, leadership and other important skills.

 **Yoga & Meditation**  
Persistence, Self-reliance, Endurance, Mental Growth

 **Sports**  
Mental and Physical Development  
Teamwork and Network

 **Motivation**  
Commitment & Ethics

 **Languages**  
English & Foreign

 **Cultural Clubs**  
Cultural Presentation: Modern Traditions Clubs, Performing Arts & Hobby Clubs

 **Social & Traditions**  
Morals & Responsibilities

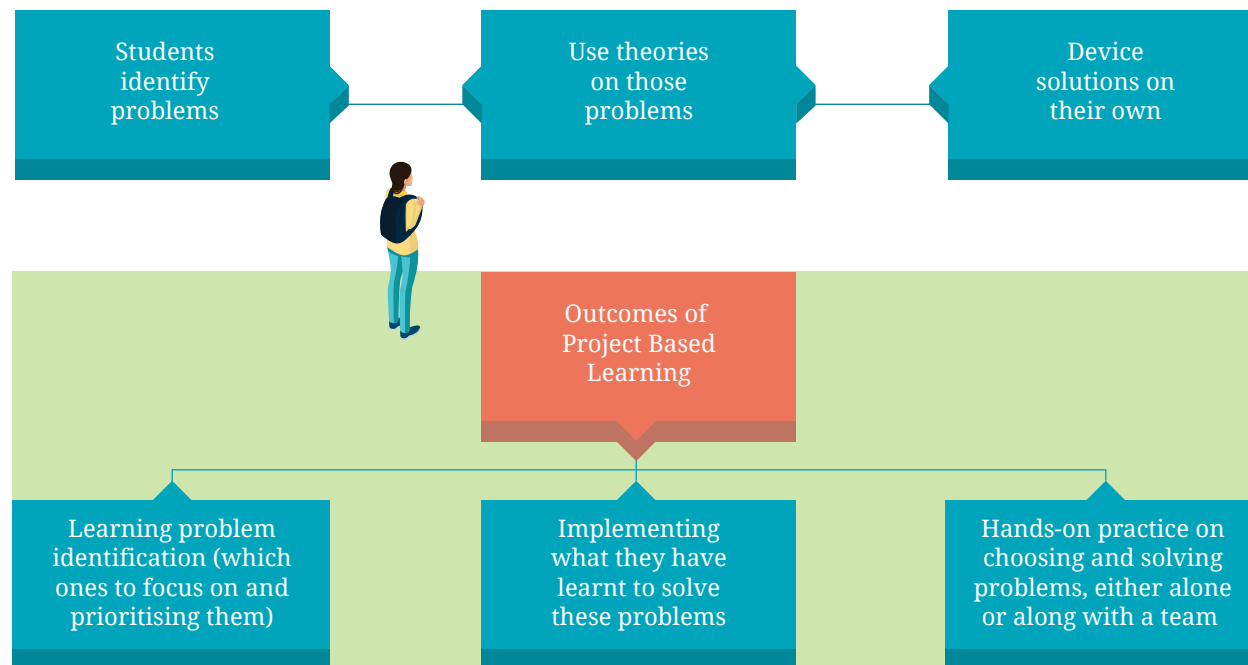
 **Psychology**  
Counseling (Professional & Personal)



# DISCOVER LEARNING BEYOND TEXTBOOKS

**PROJECT BASED LEARNING** bridges the gap between academic syllabus and skills required by today's fast-growing industries.

This starts from the first semester itself.



- Regular Project Fairs are organized and industry experts are invited to give inputs to each project group.
- These projects have been designed to provide an opportunity to the students to explore the potential of technology in enhancing the life of people through engineering solutions.



# DISCOVER THE POSSIBILITIES OF INDUSTRY-ACADEMY COLLABORATIONS

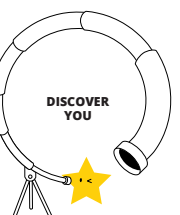
In order to produce highly employable skilled engineers, Marwadi Education Foundation has become the 1st institute in the state to foster collaboration between academics and industry by incorporating courses offered by leading industries as a part of the curriculum.

## Existing collaborations



# DISCOVER YOUR INNER BUSINESS TYCOON

Entrepreneurship gets a special focus at the university with a dedicated cell to help students explore the path of starting their own business right after they get their degree. With proper mentoring, the students become job-makers rather than job-seekers.



# DISCOVER A WORLD CLASS CAMPUS

Great education cannot be imparted in a mediocre campus. Marwadi University has gone much beyond the AICTE defined norms in creating a campus that facilitates 360 degree development of students and faculty. The extensive campus with its world class facilities is spread on a space of over 10 lac sq. ft. making the university capable of educating 8500+ students on a daily basis.

Life at Marwadi University campus is the closest to the definition of the pleasures of student life with just the equal proportions of education, recreation, bonding and overall development.

Delve further  
into what awaits  
every student at  
the university!



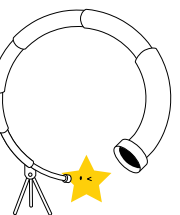
A serene lake surrounded by jogging tracks



## DISCOVER WIDE OPEN GREEN SPACES

Spread on a space of over **10 lac sq. ft. area**, the campus opens many possibilities.

- Fantastic accommodation facilities in hostels
- A serene lake surrounded by jogging tracks
- A multipurpose amphitheater for academic and recreational purposes
- Lots of green, open spaces to breathe in the nature
- Multiple food joints with delectable food options
- A vast auditorium for major functions and events





# DISCOVER A WORLD OF BOOKS

Guinness World  
Record for

“Most People  
Participating in  
a Reading Relay  
at a Single Venue”

**Date:** 22nd September, 2015, Tuesday  
**Location:** Library - Learning Resource Centre  
**Timings:** 8:00 am to 6:30 pm  
**Total Participation:** 3071 Students and Staff  
**Faculty Coordinators:** 50+  
**Student Volunteers:** 100+

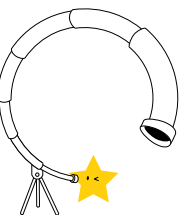
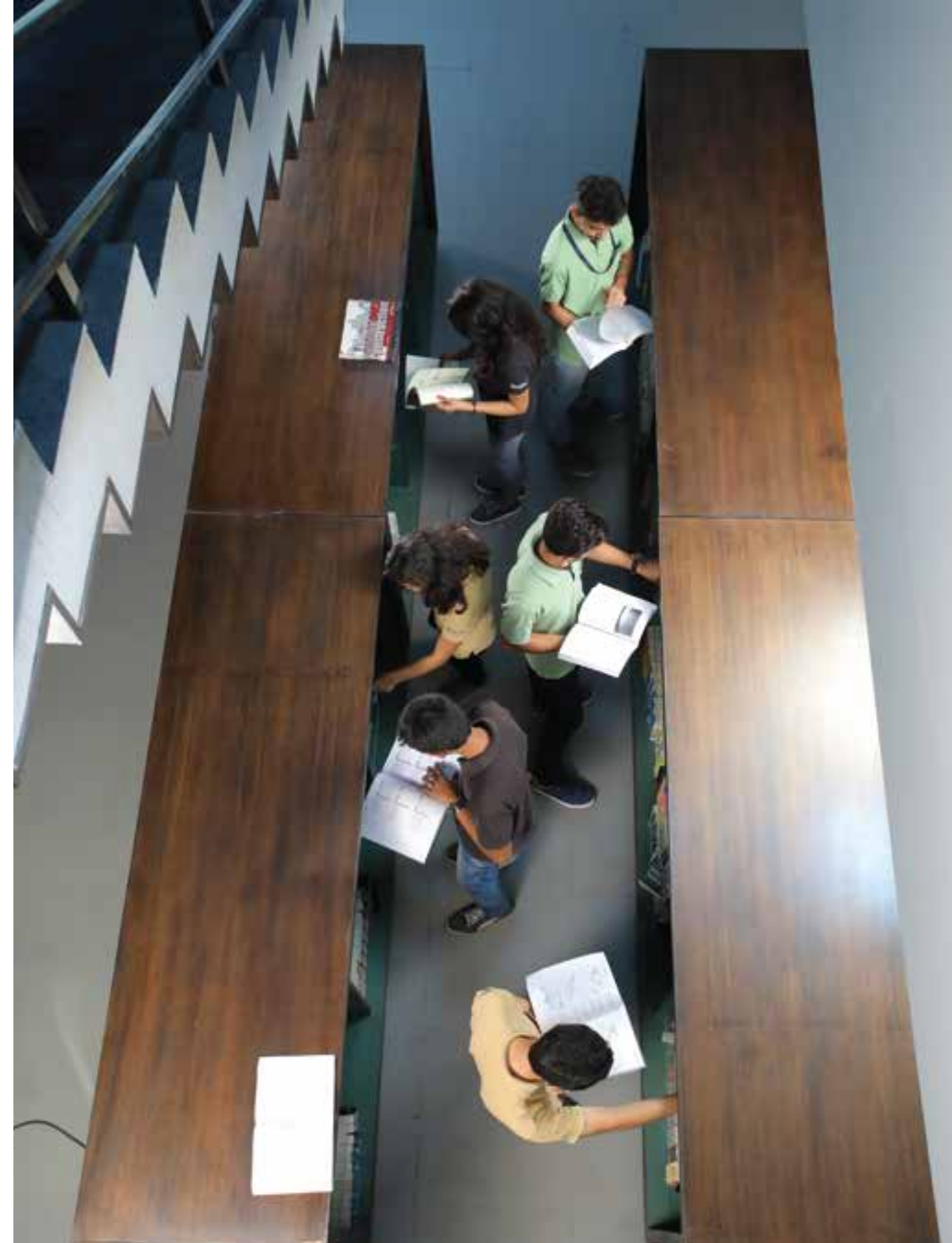


Introducing  
the Guinness  
World Record  
Holder Library!

Reading relay of

“An Autobiography or The Story of  
My Experiments with Truth”  
by Mahatma Gandhi

- Kindle devices in Library Circulation for digital reading
- 50,000+ books
- 33,500+ sq. ft. area
- 60+ computer systems in the E-Resource Lab for online resources & research
- Dedicated Mobile Application with features like Intimation, Alerts, History, Account Status & Books Search
- **Koha** - RFID integration with LIS KOHA and in-house ERP system
- Open Source KOHA Library Management Software integration with in-house ERP system
- **RFID** based book issuance system
- Specially designed kiosk for self check-in and check-out
- Live Webinar facility
- Connected with worldwide libraries and resource centres
- Separate study and discussion rooms
- Additional late evening and Sunday transportation facility



# DISCOVER FUTURISTIC LABS

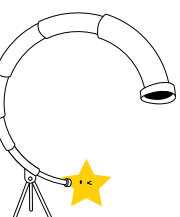
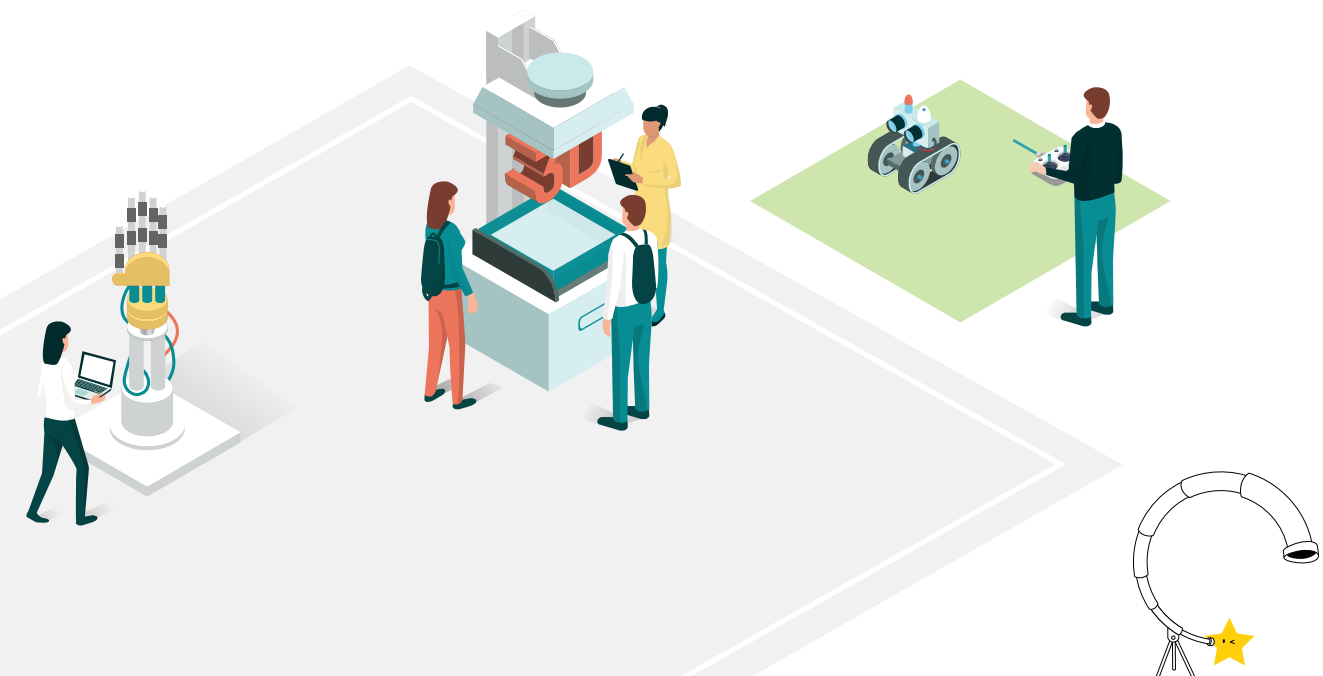
Marwadi University is creating professionals and innovators for the future through exclusively sourced equipment available only at other top universities of India. The labs and facilities at the university ensure our students learn by 'doing' things rather than just watching and listening.



Ultramodern lab in association with Bosch Rexroth (Germany) is developed to impart training to students as well as faculty members, along with a joint certificate of Bosch Rexroth and Marwadi University.



- Mechatronics Lab
- Wireless Communication and Satellite Communication
- Automation Lab
- Cyber Security Lab
- IBM Lab
- High Performance Microsoft Computing Lab
- Wipro UTLP Board
- Mortar Mixing & Concrete Cutter Machine
- CNC/ VMC Lab
- CNC Lathe Machine
- 3D Printer
- High Voltage Lab
- Robotics Lab
- Earthquake Engineering Lab
- Data Processing Lab
- CISCO Lab
- Mechanical Workshop
- Apple Mac Lab
- 8 channel data Analog Tokyo Sokki Japan
- NDT equipment (Rebound Hammer & UPSV Test)
- VMC Machine
- Aero Modeling Lab
- Chemistry Lab



# DISCOVER DORM LIFE

Hostels at Marwadi University make sure the students lead more than just a comfortable life. Equipped with facilities like gym, TV Room and other basic amenities; the students stay and grow at the hostels throughout their degree at the university.




## BUS ROUTES

### Rajkot - 300+ Pickup Points

- 📍 Dhrol - Padadhari - Ghanteshwar
- 📍 Wankarner - Mitana
- 📍 Morbi - Tankara - Ratanpar - Gauridal
- 📍 Gondal - Shaper - Ribda - Biliyada
- 📍 Jasdan - Atkot - Sardhar - Virnagar - Tramba




2000+  
  
Accommodation for 2000+ students

  
Separate hostels for boys and girls

  
Spacious and well ventilated rooms - balcony in every room

  
Fully furnished (bed, bedding, wardrobe, study table)

  
Individual lockers

  
Gym facility

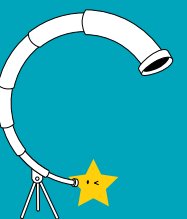
  
1000 pax capacity amphitheatre

  
Lake and Jogging Track

  
24 hours surveillance

  
Banking facility

  
RO drinking water





# DISCOVER FANTASTIC FOOD

Delicious and hygienic food with canteen hall having 1000+ pax capacity along with many other snacks outlets across the university.

Freshly cooked unlimited meals 4 times a day (Breakfast, Lunch, High Tea and Dinner) by the best caterer of India.



Arrangement has been made for the boys and girls to dine separately.

The cafeteria of college is an ideal place for students to hangout and spend leisure time.

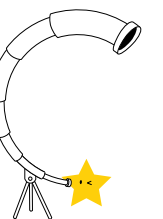
The cafeteria provides fresh & hygienic food to students.

Large canteen hall with facility for 1000 members to have breakfast and lunch.

# DISCOVER THE ARTIST WITHIN

Recreational spaces have been designed for the students to practice their favorite artistic hobbies in addition to special training and classes.

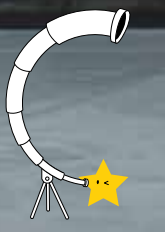
- Professional level training in various music and dance styles
- Voice training and singing sessions for competitions and events
- Consistent zonal and inter-zonal level championships at Youth Festival organized by GTU



# DISCOVER YOUR BIGGEST COMPETITION -YOU!

'Discover You' means going beyond just the academics and professional life. The dedicated 4-story sports complex makes sure that the students keep pushing their limits on the sports field as well.

- Students participate and win at various state-level and national-level sports competitions.
- Intra and inter college sports competitions organized at the university regularly.



# DISCOVER FRIENDLY MENTORS

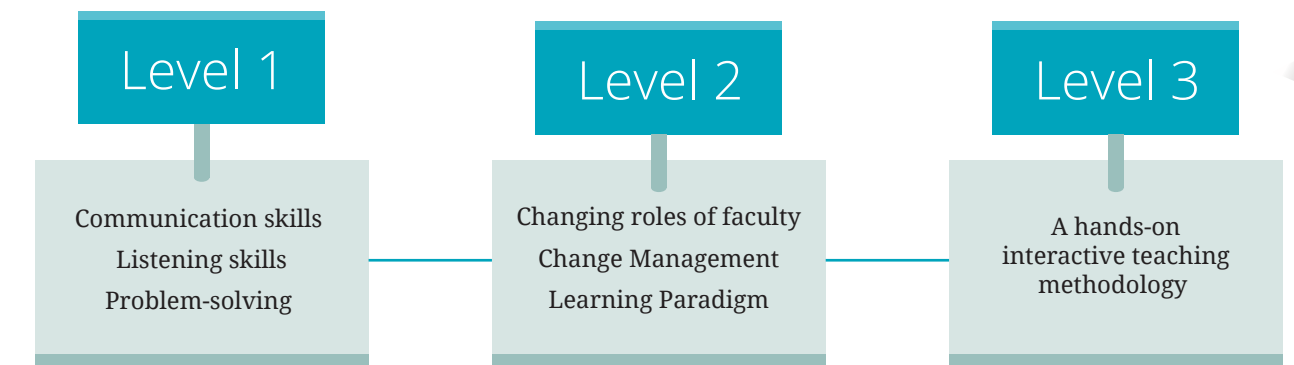
Educating and mentoring students to turn them into professionals takes more than just having knowledge and imparting it. Marwadi University is known for the rigorous process of yearly campus drives for faculty selection with top 20 institutes of the country. This process is called bringing in the best to bring the best out of the students.



- 500+ expert faculty with rich and diverse background
- 80+ PhD faculty (highest in Gujarat)
- Industry experience in over 10 countries
- National and international experience like Stanford, IITs, NITs, BITS, Anna University etc.
- 15%+ faculty with experience in foreign universities
- All faculty members involved in at least one area of research
- Regular faculty participation in national and international seminars
- Regular paper publication in leading academic journals
- Comprehensive policy for faculties pursuing Ph.D and Post Doctorate Research
- Mentor program for students, each faculty mentors 20 students

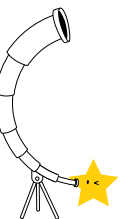
## Faculty Development Programs

With focus on continuously improving the learning experiences of students, systematic layered FACULTY DEVELOPMENT PROGRAMS have been developed under an independent director.



## Other Faculty Development Activities:

- Mentoring Skills
- Personality Analysis & Personal Effectiveness
- Feedback & Assessment
- Academic Leadership



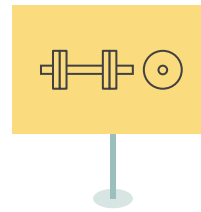
# DISCOVER NEW FRIENDS

At Marwadi University, the students get a chance to connect with those who share common interests rather than just the classroom or laboratory.



## Social Clubs

- Fitness Club
- Astronomy Club
- Public Speaking Club and many more



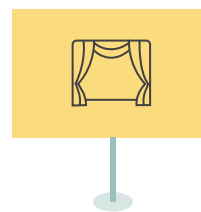
## Technical Clubs

- Innovation Club
- Cyberoam Club
- MATLAB Club and many more



## Recreation Clubs

- Movie Club
- Music Club
- Cultural Club and many more



## Academic Clubs

- Construction Club
- GATE Club
- CAD Modelling Club and many more
- GenY forum
- Reader's Forum



# DISCOVER A COOL SOCIAL SCENE



Rajkot Smart City Hackathon 2017



Cancer Awareness Drive

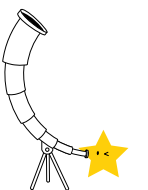


Mission Smart City

Workshop on 'Learning Programming Logic with Fun'



Marwadi University Foundation Day



# MU FEST CONFLUENCE OF TALENTS

**MU Fest** is the annual confluence of talents which celebrates a wide range of talents of students across the university. Apart from a delightful and vibrant array of student performances, the university brings in artists and celebrities to ring in the celebrations.



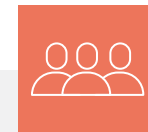
## Glimpses from MU FEST

- Live concerts by bollywood artists like Armaan Malik, Sachin, Jigar
- Cultural performance by students on traditional songs
- Indian Idol finalist Niraj Bakshi putting on a spectacular performance
- Fusion Dance
- Students having time of their lives during the events

# DISCOVER CULTURES ACROSS BORDERS

Marwadi University is also a home to students from diverse countries that look towards India for higher education. The university makes sure that international students don't feel out of place while gelling up with other students.

8,500+ students from  
22 states and 14 countries



Special team to assist them from application till graduation



Comprehensive facilities for all-round development



Specially designed cuisine options



Specialized teaching of listening and speaking skills

# DISCOVER THE WORLD WITH GLOBAL EXPOSURE

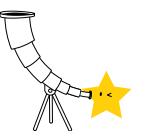
For today's students, the world is their competition. At Marwadi University, internationalization is identified as one of the most important strategic objectives for institutional development.

A dedicated International Relations Desk is the constant connection between Marwadi University and the world.

Marwadi University regularly organizes overseas learning program visits to give them a real-life experience of global industries.

Our students and faculties have already been a part of extensive learning and student exchange programs in reputed universities of Germany, Poland, Belgium, USA and other countries. These students not only were a part of the programs but also represented the university and the country at large on global platform. Summer Immersion and Global Exchange programs are continuous processes at Marwadi University.

Moreover, the university organizes various international events at the campus, letting the students connect with students, faculty and industry experts from different parts of the world.





## Expert Talk

Expert Technical Talk and Spot Admission for Fall 2017, Illinois Institute of Technology, USA at Marvadi University.

## Erasmus+

EURAXESS India Officer Ms. Ainhitze Bizkarrategorra Bravo, Country Representative, EURAXESS India with Dr. Shreejata Gupta, EURAXESS Science Slam India finalist 2015 & Erasmus Mundus alumni visited MU and encouraged students to join EURAXESS and participate in Science Slam competition.

## Germany Summer School

A group of 16 students and one professor comprising of Mechanical, Computer, Information Technology and Automobile Engineering visited Technical University of Kaiserslautern, Germany

## MU students in Poland

A group of 11 students and one professor comprising of Electrical, Mechanical, Environmental and Chemical Engineering students visited Wroclaw University of Science and Technology, Poland

## International Experts at MU

Mr. Andrzej Stuczynski, Economic Section, Embassy of the Republic of Poland in New Delhi addressing MU students on Engineering Day celebrations at MU. He encouraged students to see Poland as a land of opportunities for higher education as well as research.

## France

Dr. Sandrine Maximilien, Attachée for Academic, Scientific & Technological Cooperation French Embassy in India – Mumbai – addressing MU students on Engineering Day celebrations at MU. He encouraged students to see France as a promising & favorable country for higher education as well as research



# ADMISSIONS

Admission to all the programs offered by Marwadi University is governed as per the university norms.

Apply online on [www.marwadiuniversity.ac.in](http://www.marwadiuniversity.ac.in). Admission to various branches of Engineering, MBA, MCA and Architecture is done through the centralized Admission Procedural norms of Admission Committee for Professional Courses, Govt. of Gujarat (ACPC) and Gujarat Technological University (GTU) and Marwadi University.

Students are advised to visit website [https:// www.marwadiuniversity.ac.in/admissions/](https://www.marwadiuniversity.ac.in/admissions/) for updated information on the admission to various programs or call / SMS / WhatsApp on +91 89800 30090

[www.marwadiuniversity.ac.in](http://www.marwadiuniversity.ac.in)

WhatsApp : +91 89800 30090

## Admission Process of ACPC (For Engineering, MBA, MCA and Architecture)

All the government seats of the first year of Engineering, MBA, MCA and Architecture shall be filled on the basis of merit list prepared by ACPC constituted under section 4 of the Act of Admissions by Government of Gujarat.

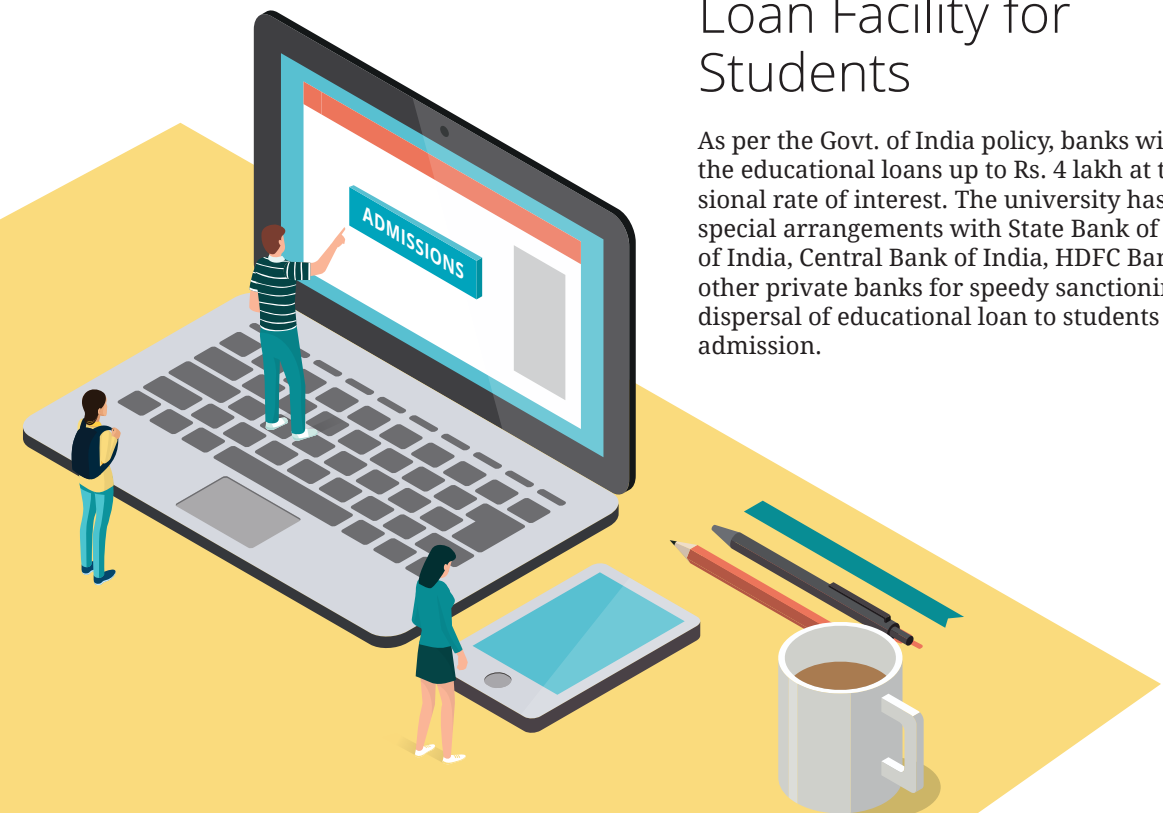
All the management seats of the first year of Engineering, MBA & MCA shall be filled by the management of the respective professional educational college or institution, on the basis of inter-se merit list of the students whose names appear in the same.

For admission process and guidelines, visit: [www.jacpldce.ac.in](http://www.jacpldce.ac.in)

Admission to all the programs offered by Marwadi University is governed as per the university norms. Apply online on [www.marwadiuniversity.ac.in](http://www.marwadiuniversity.ac.in)

## Loan Facility for Students

As per the Govt. of India policy, banks will facilitate the educational loans up to Rs. 4 lakh at the concessional rate of interest. The university has made special arrangements with State Bank of India, Bank of India, Central Bank of India, HDFC Bank and other private banks for speedy sanctioning and dispersal of educational loan to students taking admission.



# DISCOVER INDIA'S GROWTH ENGINE: GUJARAT



Gujarat is the Fastest Growing Economy in the country!



- Tremendous growth in the past decade under effective governance
- Vibrant Gujarat Summit connecting the state with the world
- A fast paced economy and holistic industrial development
- Strong fundamentals along with entrepreneurial spirit, excellent infrastructure, stable governance and business friendly policies
- Home to top notch companies and institutions like LDCE, IIT, IIM, SPIPA, EDI, ISRO, L&T, Tata, GM, PRL, IPR, TCS etc.
- Low crime rate across the state
- Drug-free and liquor-free state, making it safe for all
- Rich history with a vibrant tourism industry

# DISCOVER A CITY OF FOODIES. DISCOVER RAJKOT

A flourishing city with thriving industrial hub

- 3rd fastest growing city of the country
- 22nd fastest growing city in the world according to a research by [www.citymayors.com](http://www.citymayors.com)
- Significant contribution to the state economy under the patronage of GIDC and GSFC
- 280 million USD World Bank aid for development of infrastructure
- Convenient rail, road and air connectivity
- Industrial hub of automotive
- Leading center of India in the field of diesel engine and submersible pumps
- Thriving casting and forging industries
- Home to India's leading snack brand

