



**Marwadi**

Education Foundation

Group of institutions

Global Learning Platform

**FACULTY OF MANAGEMENT**

as a part of Integrated Campus with

Marwadi Education Foundation's Group of Institutions,

Rajkot

**MANDATORY DISCLOSURE**

**FACULTY OF MANAGEMENT**  
as a part of Integrated Campus with  
**Marwadi Education Foundation's Group of Institutions,**  
Rajkot

## **MANDATORY DISCLOSURE**

Mandatory Disclosure	: Updated on 22-02-2011
AICTE File No.	: E&T/CRO-IC/New/2009-10/04
Date & Period of last approval	: 23 <sup>rd</sup> August 2010
Name of the Institution	: MARWADI EDUCATION FOUNDATION'S GROUP OF INSTITUTIONS – Faculty of Management
Address of the Institution & Pin Code	: Faculty of Management Marwadi Education Foundation's Group of Institutions Rajkot-Morbi Road, AT & PO : Gauridad Rajkot 360 003. Dist. Rajkot.
State / Union Territory	: Gujarat State
Longitude & Latitude	: 22°18'0" N; 70°47'0" E
Phone Number with STD Code	: 0281-2923112
Fax No. with STD code	: 0281-2332502
Office Hours at the Institution	: 9.00 AM to 5.00 PM – Monday to Saturday
Academic Hours at the Institution	: 8.00 AM to 5.00 PM – Monday to Saturday
Email	: <a href="mailto:info@marwadieducation.edu.in">info@marwadieducation.edu.in</a>
Website	: <a href="http://www.marwadieducation.edu.in">www.marwadieducation.edu.in</a>
Nearest Railway Station (distance In Km)	: Rajkot Junction. 10 Km from the Campus
Nearest Airport (distance in Km)	: Rajkot Airport. 10 Km from the campus
Type of Institution	: Private. Self-Financed.
Category (1) of the Institution	: Non-Minority
Category (2) of the Institution	: Co-Education

Name of the Organization running the Institution : MARWADI EDUCATION FOUNDATION Rajkot.

Type of the Organization : Registered Trust

Address of the Organization Registered with : Joint Charity Commissioner Rajkot

Registration No. and Date : E/8458/Rajkot dated 24.10.2008

Website of the Organization : [www.marwadieducation.edu.in](http://www.marwadieducation.edu.in)

Name of the Affiliating University : Gujarat Technological University

Address : ACPC Building, L.D. College of Engineering Campus. Navrangpura Ahmedabad 380 009. Gujarat. India

Website : [www.gtu.ac.in](http://www.gtu.ac.in)

Latest Affiliation Period : 2 years

Name of Principal/Director : Dr. S. Chinnam Reddy

Exact Designation : Dean

Phone No. with STD Code : 0281-2923112

Fax No. with STD Code : 0281-2332502

Email : [screddy07@marwadieducation.edu.in](mailto:screddy07@marwadieducation.edu.in)

Highest Degree : Ph.D

Field of Specialization : Operations Research

Governing Board Members :

1. Mr. Ketan H. Marwadi, Chairman, MEFGI
2. Mr. Jitendra A. Chandarana, Vice Chairman, MEFGI
3. Dr. Yogesh P. Kosta, Director, MEFGI
4. Prof. K.K. Khakhar, Advisor, MEFGI
5. Prof. N.R. Dave
6. Dr. S. Chinnam Reddy, Principal/Dean, Faculty of Management
7. Dr. V.R. Rathod, Principal/Dean, Faculty of Computer Applications, MEFGI
8. Dr. R.B. Jadeja, Principal/Dean, Faculty of Engineering
9. Mr. Ravi Jagani, Amul Industries, Rajkot

10. Mr. Parakramsinh Jadeja, Chairman, Jyoti CNC, Rajkot.
11. Member Nominee from AICTE, New Delhi.
12. Member Nominee from Director of Technical Education, Govt. of Gujarat.
13. Member Nominee from Gujarat Technological University, Ahmedabad.
14. Member Secretary

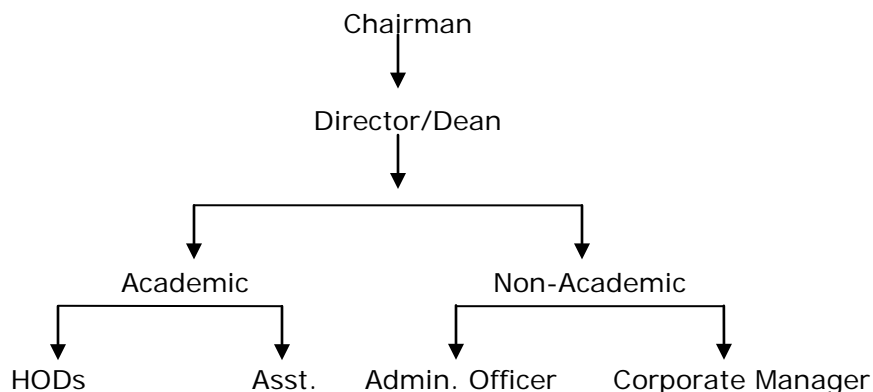
Frequency of Meetings & Date of Last Meeting : Once in every quarter. Last Meeting was held on : 10<sup>TH</sup> January 2011

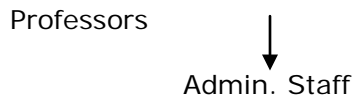
Academic Advisory Body :

1. Mr. Ketanbhai Marwadi, Chairman. MEFGI
2. Mr. Jitubhai Chandarana, Vice Chariman, MEFGI.
3. Dr. Yogesh P. Kosta, Director, MEFGI
4. Dr. N. Ravichandran, Director, IIM, Indore
5. Dr. D.C. Anjaria
6. Dr. K.K. Khakhar
7. Mr. Kiran Bhalodia
8. Mr. Parakramsinh Jadeja, CMD, Jyoti CNC
9. Mr. Ravi Jaghani, Amul Industries
10. Dr. S. Chinnam Reddy, Dean/Principal, Faculty of Management
11. Dr. V.R. Rathod, Dean/Principal, Faculty of Computer Applications, MEFGI.
12. Dr. Rajendrasinh Jadeja, Dean/Principal, Faculty of Engineering
13. Prof. N.R. Dave, Gujarat Petroleum University
14. Mr. Vikram Sanghani
15. Dr. V.V. Rama Subba Rao
16. Dr. VRS Cowlagi, IAS
17. Mr. Sunil Parekh
18. Dr. Uma Ganesh

Frequency of Meetings & Date of Last Meeting : Once in every quarter. Last meeting was held on : 8<sup>th</sup> January 2011

Organizational Chart :





Student Feedback Mechanism On Institution: : Regular Feedback through Suggestion Boxes installed at different places such as Library, etc. which are Opened very frequently, complaints/suggestions etc. are discussed in the Management Meet, appropriate actions initiated and students are informed through public notice boards. Frequent parents meetings between the Management and Parents of students also part of feedback for improvement/initiating corrective measures.

Governance/Faculty Performance : Frequent meetings among the Faculty Members, Faculty Members and the Management are held in the Institution with the sole purpose of providing quality Education to the student community.

A special format has been devised to get the student Feedback on the Faculty for each semester – with different parameters on the Course, an mode of Instruction

Grievance redress mechanism for Faculty, Staff & Students : Meetings between the Faculty Members and the Management; Staff and Management; Students, Faculty Members and the Management are regularly held in the Institute for the redressal of grievances.

Name of the Department : Faculty of Management

Course : Master of Business Administration (MBA) – 2-year Full time programme.

Level : Post Graduate

1<sup>st</sup> Year of Approval by the Council : E&T/CRO-IC/New/2009-10/04, dt. 27/06/09.

SN	Course	Year Wise Sanction Intake		Actual Admission		Fees In Rupees		No. of Fee Waiver		Admission Calendar		PIO Quota
		2010-11	2009-10	2010-11	2009-10	2010-11	2009-10	2010-11	2009-10	2010-11	2009-10	
1	MBA	120	60	120	60	46000	32000	N/A	N/A	2010-12	2009-11	No

Accreditation Status of the Course : Not Accredited


Doctoral Courses : NA

Foreign Collaborations, if any : NA

Professional Society Memberships : NA


Professional Activities : NA


**Consultancy Activities : NA**


<b>10.13</b>	<b>Name of Teaching Staff*</b>	Dr. S. Chinnam Reddy		
	<b>Designation</b>	Dean		
	<b>Department</b>	Management		
	<b>Date of Joining the Institution</b>	23/07/2009		
	<b>Qualifications with Class / Grade</b>	B.Sc.-First Class	M.Sc.-First Class	PhD
	<b>Total Experience in Years</b>	Teaching – 16	Industry – 0	Research – 2
	<b>Papers Published</b>	National – 2		International – 0
	<b>Papers Presented in Conferences</b>	National – 6		International – 4
	<b>PhD Guide? Give field &amp; University</b>	Field – 0		University – 1
	<b>PhDs / Projects Guided</b>	PhDs – 6		Projects at Masters level – 0
	<b>Books Published / IPRs/ Patents</b>	1		
	<b>Professional Memberships</b>	Operalines Research Society of India, Case Research society of India		
	<b>Consultancy Activities</b>	Consultancy with companies		
	<b>Awards</b>	0		
	<b>Grants fetched</b>	0		
	<b>Interaction with Professional Institutions</b>	Worked with IIM-A, MICA, AMA, Management Area		


<b>10.13</b>	<b>Name of Teaching Staff*</b>	Niharika S. Bajaja		
	<b>Designation</b>	Assistant Professor		
	<b>Department</b>	Management		
	<b>Date of Joining the Institution</b>	01/07/2010		
	<b>Qualifications with Class / Grade</b>	BA-Second Class	MBA-First Class	PhD-N/A
	<b>Total Experience in Years</b>	Teaching – 7.7	Industry – 2	Research – 0
	<b>Papers Published</b>	National – 0		International – 0
	<b>Papers Presented in Conferences</b>	National – 0		International – 0
	<b>PhD Guide? Give field &amp; University</b>	Field – 0		University – 0
	<b>PhDs / Projects Guided</b>	PhDs – 0		Projects at Masters level – 0
	<b>Books Published / IPRs/ Patents</b>	0		
	<b>Professional Memberships</b>	0		
	<b>Consultancy Activities</b>	0		
	<b>Awards</b>	0		
	<b>Grants fetched</b>	0		
	<b>Interaction with Professional Institutions</b>	0		





<b>10.13</b>	<b>Name of Teaching Staff*</b>	Rhuta J. Mehta			
	<b>Designation</b>	Assistant Professor			
	<b>Department</b>	Management			
	<b>Date of Joining the Institution</b>	16/07/2009			
	<b>Qualifications with Class / Grade</b>	BE-First Class	MBA-First Class	PhD-N/A	
	<b>Total Experience in Years</b>	Teaching – 4	Industry – 7	Research – 0	
	<b>Papers Published</b>	National – 0		International – 0	
	<b>Papers Presented in Conferences</b>	National – 4		International – 3	
	<b>PhD Guide? Give field &amp; University</b>	Field – 0		University – 0	
	<b>PhDs / Projects Guided</b>	PhDs – 0		Projects at Masters level – 0	
	<b>Books Published / IPRs/ Patents</b>	0			
	<b>Professional Memberships</b>	0			
	<b>Consultancy Activities</b>	0			
	<b>Awards</b>	0			
	<b>Grants fetched</b>	0			
	<b>Interaction with Professional Institutions</b>	0			

<b>10.13</b>	<b>Name of Teaching Staff*</b>	Bhargav H. Pandya			
	<b>Designation</b>	Assistant Professor			
	<b>Department</b>	Management			
	<b>Date of Joining the Institution</b>	01/07/2010			
	<b>Qualifications with Class / Grade</b>	BBA-Second Class	MBA-First Class	PhD-N/A	
	<b>Total Experience in Years</b>	Teaching – 5.4	Industry – 1.2	Research – 0	
	<b>Papers Published</b>	National – 0		International – 0	
	<b>Papers Presented in Conferences</b>	National – 0		International – 0	
	<b>PhD Guide? Give field &amp; University</b>	Field – 0		University – 0	
	<b>PhDs / Projects Guided</b>	PhDs – 0		Projects at Masters level – 0	
	<b>Books Published / IPRs/ Patents</b>	0			
	<b>Professional Memberships</b>	0			
	<b>Consultancy Activities</b>	0			
	<b>Awards</b>	Accredited Management Teacher – AIMA – CMS			
	<b>Grants fetched</b>	0			
	<b>Interaction with Professional Institutions</b>	0			


<b>10.13</b>	<b>Name of Teaching Staff*</b>	Bhavik M. Panchasara			
	<b>Designation</b>	Assistant Professor			
	<b>Department</b>	Management			
	<b>Date of Joining the Institution</b>	18/02/2010			
	<b>Qualifications with Class / Grade</b>	B.Com-First Class	M.Com-First Class	PhD-N/A	
	<b>Total Experience in Years</b>	Teaching – 3.7	Industry – 0	Research – 0	
	<b>Papers Published</b>	National – 0		International – 0	
	<b>Papers Presented in Conferences</b>	National – 3		International – 0	
	<b>PhD Guide? Give field &amp; University</b>	Field – 0		University – 0	
	<b>PhDs / Projects Guided</b>	PhDs – 0		Projects at Masters level – 0	
	<b>Books Published / IPRs/ Patents</b>	0			
	<b>Professional Memberships</b>	0			
	<b>Consultancy Activities</b>	0			
	<b>Awards</b>	0			
	<b>Grants fetched</b>	0			
	<b>Interaction with Professional Institutions</b>	0			

<b>10.13</b>	<b>Name of Teaching Staff*</b>	Binita M. Shah		
	<b>Designation</b>	Assistant Professor		
	<b>Department</b>	Management		
	<b>Date of Joining the Institution</b>	02/03/2010		
	<b>Qualifications with Class / Grade</b>	B.Com-First Class	PGDM-First Class	PhD-N/A
	<b>Total Experience in Years</b>	Teaching – 1	Industry – 2	Research – 0
	<b>Papers Published</b>	National – 0		International – 0
	<b>Papers Presented in Conferences</b>	National – 0		International – 0
	<b>PhD Guide? Give field &amp; University</b>	Field – 0		University – 0
	<b>PhDs / Projects Guided</b>	PhDs – 0		Projects at Masters level – 0
	<b>Books Published / IPRs/ Patents</b>	0		
	<b>Professional Memberships</b>	0		
	<b>Consultancy Activities</b>	0		
	<b>Awards</b>	0		
	<b>Grants fetched</b>	0		
	<b>Interaction with Professional Institutions</b>	0		


<b>10.13</b>	<b>Name of Teaching Staff*</b>	Riddhi D. Dave			
	<b>Designation</b>	Assistant Professor			
	<b>Department</b>	Management			
	<b>Date of Joining the Institution</b>	10/06/2010			
	<b>Qualifications with Class / Grade</b>	B.Sc-Distinction	MBA-Distinction	PhD-N/A	
	<b>Total Experience in Years</b>	Teaching – 0.8	Industry – 5	Research – 0	
	<b>Papers Published</b>	National – 0		International – 0	
	<b>Papers Presented in Conferences</b>	National – 0		International – 0	
	<b>PhD Guide? Give field &amp; University</b>	Field – 0		University – 0	
	<b>PhDs / Projects Guided</b>	PhDs – 0		Projects at Masters level – 0	
	<b>Books Published / IPRs/ Patents</b>	0			
	<b>Professional Memberships</b>	0			
	<b>Consultancy Activities</b>	0			
	<b>Awards</b>	0			
	<b>Grants fetched</b>	0			
	<b>Interaction with Professional Institutions</b>	0			

<b>10.13</b>	<b>Name of Teaching Staff*</b>	Chhavi Manra			
	<b>Designation</b>	Assistant Professor			
	<b>Department</b>	Management			
	<b>Date of Joining the Institution</b>	19/07/2010			
	<b>Qualifications with Class / Grade</b>	BBA-First Class	MBA-First Class	PhD-N/A	
	<b>Total Experience in Years</b>	Teaching – 0.7	Industry – 0	Research – 0	
	<b>Papers Published</b>	National – 0		International – 0	
	<b>Papers Presented in Conferences</b>	National – 0		International – 0	
	<b>PhD Guide? Give field &amp; University</b>	Field – 0		University – 0	
	<b>PhDs / Projects Guided</b>	PhDs – 0		Projects at Masters level – 0	
	<b>Books Published / IPRs/ Patents</b>	0			
	<b>Professional Memberships</b>	0			
	<b>Consultancy Activities</b>	0			
	<b>Awards</b>	0			
	<b>Grants fetched</b>	0			
	<b>Interaction with Professional Institutions</b>	0			

<b>10.13</b>	<b>Name of Teaching Staff*</b>	Kumargaurav K. Ghela			
	<b>Designation</b>	Assistant Professor			
	<b>Department</b>	Management			
	<b>Date of Joining the Institution</b>	14/02/2011			
	<b>Qualifications with Class / Grade</b>	B.Com-Second Class	MBA-First Class	PhD-N/A	
	<b>Total Experience in Years</b>	Teaching – 2	Industry – 1	Research – 0	
	<b>Papers Published</b>	National – 1		International – 0	
	<b>Papers Presented in Conferences</b>	National – 3		International – 1	
	<b>PhD Guide? Give field &amp; University</b>	Field – 0		University – 0	
	<b>PhDs / Projects Guided</b>	PhDs – 0		Projects at Masters level – 0	
	<b>Books Published / IPRs/ Patents</b>	0			
	<b>Professional Memberships</b>	0			
	<b>Consultancy Activities</b>	0			
	<b>Awards</b>	0			
	<b>Grants fetched</b>	0			
	<b>Interaction with Professional Institutions</b>	0			

<b>10.13</b>	<b>Name of Teaching Staff*</b>	Kaushal J. Mandalia		
	<b>Designation</b>	Assistant Professor		
	<b>Department</b>	Management		
	<b>Date of Joining the Institution</b>	19/02/2011		
	<b>Qualifications with Class / Grade</b>	BE-First Class	PGDM-First Class	PhD-N/A
	<b>Total Experience in Years</b>	Teaching – 0	Industry – 8	Research – 0
	<b>Papers Published</b>	National – 0		International – 0
	<b>Papers Presented in Conferences</b>	National – 0		International – 0
	<b>PhD Guide? Give field &amp; University</b>	Field – 0		University – 0
	<b>PhDs / Projects Guided</b>	PhDs – 0		Projects at Masters level – 0
	<b>Books Published / IPRs/ Patents</b>	0		
	<b>Professional Memberships</b>	0		
	<b>Consultancy Activities</b>	0		
	<b>Awards</b>	0		
	<b>Grants fetched</b>	0		
	<b>Interaction with Professional Institutions</b>	0		



<b>10.13</b>	<b>Name of Teaching Staff*</b>	Hardik S. Dhulia			
	<b>Designation</b>	Assistant Professor			
	<b>Department</b>	Management			
	<b>Date of Joining the Institution</b>	01/01/2011			
	<b>Qualifications with Class / Grade</b>	B.Com-First Class	CA	PhD-N/A	
	<b>Total Experience in Years</b>	Teaching – 0	Industry – 2	Research – 0	
	<b>Papers Published</b>	National – 0		International – 0	
	<b>Papers Presented in Conferences</b>	National – 0		International – 0	
	<b>PhD Guide? Give field &amp; University</b>	Field – 0		University – 0	
	<b>PhDs / Projects Guided</b>	PhDs – 0		Projects at Masters level – 0	
	<b>Books Published / IPRs/ Patents</b>	0			
	<b>Professional Memberships</b>	0			
	<b>Consultancy Activities</b>	0			
	<b>Awards</b>	0			
	<b>Grants fetched</b>	0			
	<b>Interaction with Professional Institutions</b>	0			

**ADMISSION QUOTA :**

Entrance Test/Admission Criteria : Admission through ACPC, Ahmedabad

SN	Course	Cut off Marks- General Quota		Cut off / Last candidate Admitted	
		2010-11	2009-10	2010-11	2009-10
1	MBA	2876	3373	6183	8687

**ADMISSION CALENDAR** : As per GTU norms.**PIO QUOTA****INFRASTRUCTURAL INFORMATION****Classroom/Tutorial Room  
Facilities****Laboratory Details**

**Computer Centre Facilities**



**Library Facilities**



**Auditorium**

**Auditorium/Seminar  
Halls/Amphi**





Cafeteria



**Indoor Sports Facilities**



**Outdoor Sports Facilities**

**Gymnasium Facilities**






**Facilities for Disabled**

**Any Other Facilities  
: Bus Transportation**



<b>Boys Hostel</b> <b>Girls Hostel</b>	
<b>Medical &amp; Other Facilities at Hostel:</b>	

**Academic Sessions** : 5 Sessions per day – Monday to Saturday

Examination System, Year/Semester : 2 year Program as per GTU norms.  
2 Semesters per year

**Period of Declaration of Results** :

**Counseling/Mentoring** : Yes.

Career Counseling : This will be done by the Placement Cell  
Under the guidance of the Dean.

Medical Facilities : Rajkot City is just 9 Km away from the  
Campus. We have tie-up arrangements  
with a reputed clinic for emergency  
Medical needs

**Student Insurance** :

**Students Activity Body** :

Cultural Activities : Fresher's Party; Garba Mahotsav  
Manthan@Marwadi – cultural event

Sports Activities : Indoor Games – TT/Carroms/Chess  
Outdoor Games – Cricket

Literary Activities : Seminars/Workshops/Conferences/

Quiz Programs

Magazine/Newsletter : **Different\_Strokes@Marwadi**

**Technical Activities/TechFest** :

Industrial Visits/Tours :

Alumni Activities : NA

Name of the Information Officer for RTI: Dr. S. Chinnam Reddy

Designation : Dean, Faculty of Management  
Head, Administration  
Marwadi Education Foundation's  
Group of Institutions

Phone No. with STD : 0281-2923112

Fax No. with STD : 0281-2332502

Email : screddy07@marwadieducation.edu.in